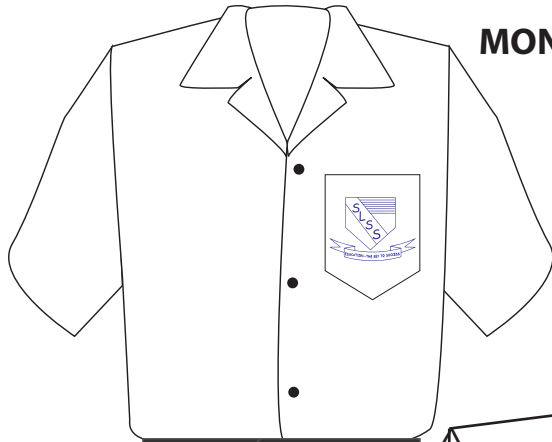




BOY'S UNIFORM

**WHITE SHIRT
MONOGRAM POCKET**



***BLACK BUTTON**

***NOT BAGGY**

***NO TAPERING**

***STRAIGHT-LEG
PANTS**

***NO FOLDS**

**2" WIDE
NO LOOPS**

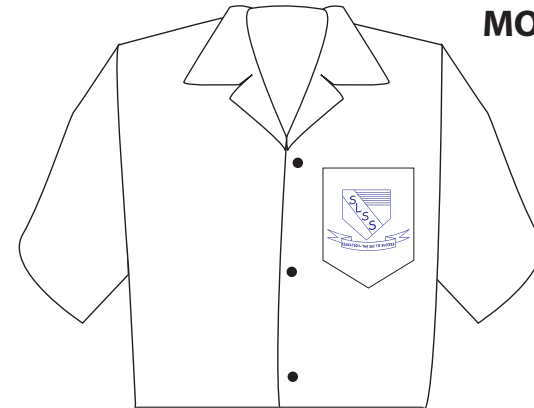
SIDE POCKETS

TWO PLEATS



GIRL'S UNIFORM

**WHITE SHIRT
MONOGRAM POCKET**



**INNER RIGHT
SIDE POCKET**

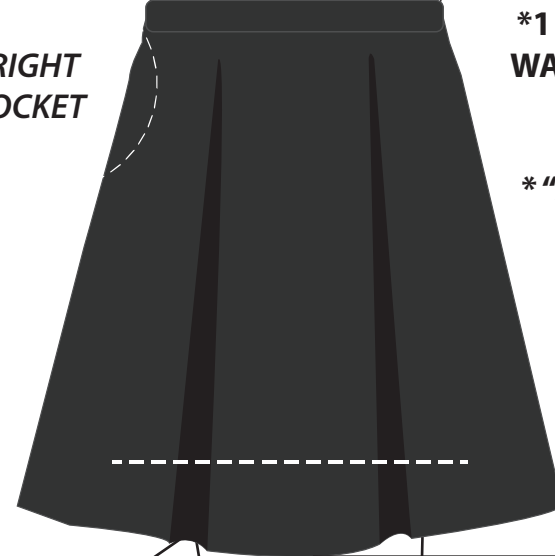
***1 1/2 INCH
WAISTBAND**

***"A" STITCH SKIRT**

KNEECAP

INVERTED PLEATS

***HEMLINE 3"
BELOW KNEE**





SUCCESS LAVENTILLE SECONDARY SCHOOL GIRL'S SCHOOL UNIFORM

The girl's uniform consists of an a-lined skirt, a Monogrammed shirt, white socks and 100% white shoes

**** The Shirt: A White Monogrammed Shirt Must Be Worn Completely Tucked Into The Skirt. A Plain White Undershirt Or Vest Must Be Worn Beneath The Shirt.***

The shirt sleeve must not be rolled up or folded.
The shirt collar must not be creased, it must lay flat.
Undergarments should not be brightly colored- colours
Such as white, navy blue, black/ flesh-tone can be worn.

**** The Skirt: Is An A-line Skirt With Box-pleat In The Center And An Inverted Pleat On Either Side Of The Box Pleat.***

The inverted pleats are to remain open from the waist and
MUST NOT be stitched down.
There must be NO LOOPS on the waistband and NO DARTS in
the skirt.
The length of the skirt must be three (3) inches below the
kneecap.
The skirt must not be altered to fit one's body type.

**** Footwear: Plain White Sneakers And One Pair Of White Socks Must Be Worn.***

The body and sole of the shoe MUST be white.
No ornaments or colored logos or threading must be present.

**STUDENTS WITHOUT WRITTEN EXCUSES SIGNED BY THEIR PARENTS/
GUARDIAN ARE LIABLE TO BE SENT HOME**



SUCCESS LAVENTILLE SECONDARY SCHOOL BOY'S SCHOOL UNIFORM

The Boy's uniform consists of a straight-cut leg pants/ trousers, a Monogrammed shirt, white socks and 100% white shoes

**** The Shirt: A White Monogrammed Shirt Must Be Worn Completely Tucked Into The Pants. A Plain White Vest Or Undershirt Must Be Worn Below The Undershirt.***

The shirt sleeve must not be rolled up or folded.
The shirt collar must not be creased, it must lay flat.

**** The Pants/ Trousers: Is A Straight-cut Leg Pants, With An Extended 1 1/2 Inch Waistband And Two Side Pockets.***

There must be NO LOOPS on the waistband.
Students should not wear two pairs of school pants at the same
time.
The hem of the pants must not be folded.
The trousers must not be tapered, or altered in any way to match
prevailing fashion trends.

**** Footwear: Plain White Sneakers And One Pair Of White Socks Must Be Worn.***

The body and sole of the shoe MUST be white.
No ornaments or colored logos or threading must be present.

**STUDENTS WITHOUT WRITTEN EXCUSES SIGNED BY THEIR PARENTS/
GUARDIAN ARE LIABLE TO BE SENT HOME**